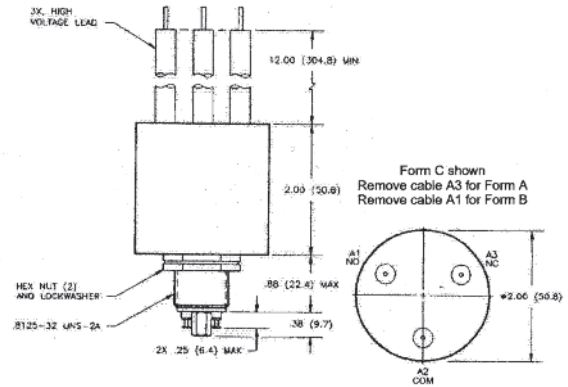
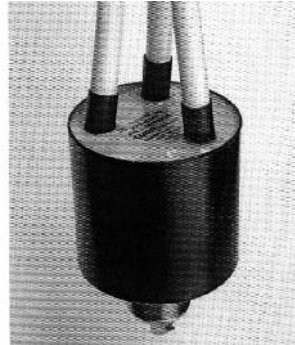


**KP61 Series — 35 kV Relays**

**Product Facts**

- SF-6 gas-filled relay is excellent for capacitive discharge applications
- Widely used in test equipment and medical instruments
- Fully operable in air and suitable for adverse environments
- Contact forms A, B & C
- 35 kV rating in compact, durable package
- Lower cost version of K61 series



Dimensions in Inches  
Tolerances Except as Noted  
.XX = ± .03  
.XXX = ± .010  
∠ X° = ± 5°  
DO NOT SCALE DWG.

**Product Specifications**

**Contact Arrangement/Form —**

SPST-NO / A  
SPST-NC / B  
SPDT / C

**Test Voltage, DC or 60 Hz (Peak) —**  
40 kV

**Rated Operating Voltage (Peak) —**  
DC or 60 Hz — 35 V

**Continuous Carry Current, Max. —**  
DC or 60 Hz — 10 A

**Contact Resistance, Max. —**  
1.0Ω

**Shock, 11ms, 1/2 Sine (Peak) —**  
20 g

**Vibration —**

Peak — 10 g (55 to 500 Hz)

**Operating Ambient Temperature**

**Range —** -55°C to +85°C

**Mechanical Life —** 1 million cycles

**Weight, Nominal —** 297.7g (10.5 oz.)

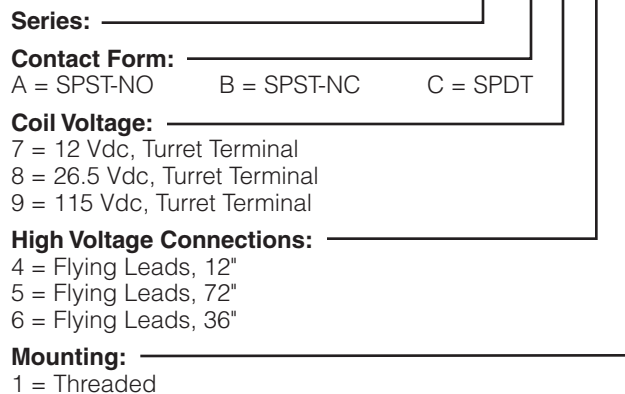
**Coil Data**

Volts, Nominal DC	12 V	26.5 V	115 V
Pickup, Max.	30 Vdc	125 Vdc	2000 Vdc
Dropout	.5-5 Vdc	1-10 Vdc	5-50 Vdc
Coil Resistance (±10%)	24	120 Ω	2000 Ω

Ratings listed are for 25°C, sea level conditions

**Ordering Information**

**Sample Part Number ►**



For factory-direct application assistance, dial 800-253-4560, ext. 2055, or 805-220-2055.