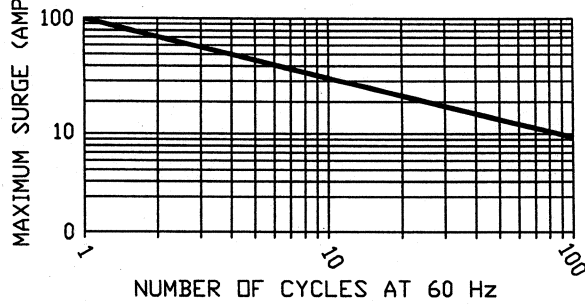


# REVISIONS

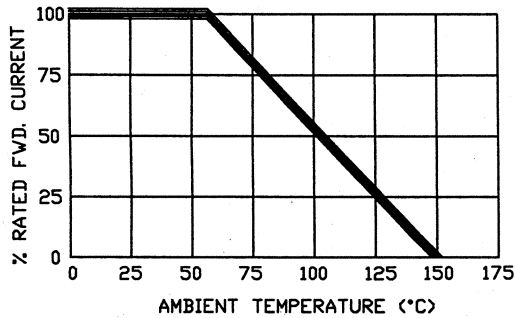
ISSUE	DESCRIPTION	DATE	APPROVAL
A	RELEASED	3/21/2013	YK <i>[Signature]</i>

## NON-REPETITIVE SURGE CURRENT

SINE WAVE INPUT @  $T_a=25^\circ\text{C}$



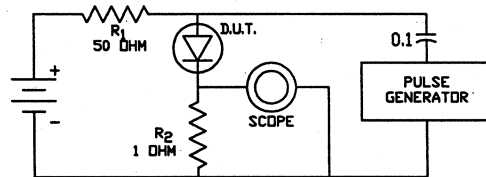
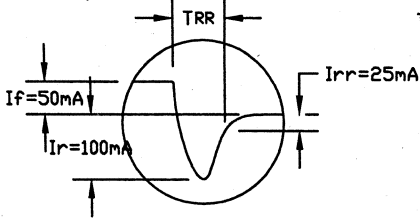
## CURRENT DERATING



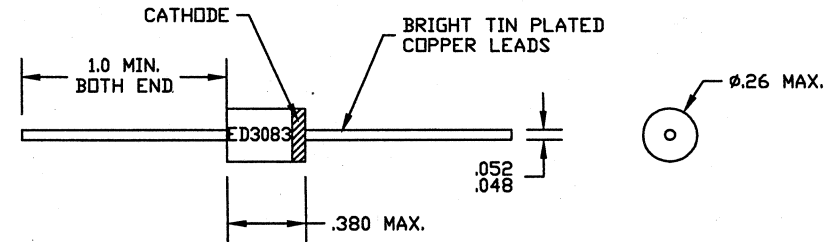
## ELECTRICAL SPECIFICATIONS

PEAK REVERSE OPERATING VOLTAGE, $V_{r(oper)}$	10 KV
AVERAGE RECTIFIED FORWARD CURRENT @ $55^\circ\text{C}$ , $I_o$	650 mA
MAX. SURGE CURRENT (1/2 CYCLE, 60 Hz), $I_{frm}$	100 A
MAX. SURGE CURRENT (10 CYCLE, 60 Hz), $I_{frm}$	25 A
MAX. FORWARD VOLTAGE DROP @ 300mA, $V_f$	12 V MAX.
MAX. DC REVERSE CURRENT @ 10KV & $25^\circ\text{C}$ , $I_r$	0.2 $\mu\text{A}$
MAX REVERSE RECOVERY, $T_{RR}$	60 nSEC
OPERATING TEMPERATURE RANGE	-55 TO +150°C
STORAGE TEMPERATURE RANGE	-55 TO +175°C

## TYPICAL REVERSE RECOVERY WAVEFORM



$R_1, R_2$  NON-INDUCTIVE RESISTORS  
 PULSE GENERATOR - HP 214 OR EQUIVALENT  
 1 KC REP. RATE - 10 $\mu\text{SEC}$ . PULSE WIDTH  
 ADJUST PULSE AMPLITUDE FOR PEAK  $I_r$



MATERIAL			FINISH		
UNLESS OTHERWISE SPECIFIED DIMENSIONS ARE IN INCHES DIMENSIONAL TOLERANCES			TITLE 10KV FAST RECOVERY HIGH CURRENT RECTIFIER		
FRAC.	DEC.	ANG.	DRAWN YK <i>[Signature]</i>	DATE 3/21/2013	 ELECTRONIC DEVICES, INC. YONKERS, NEW YORK
± 1/64	± .005	± 30'	CHECKED	DATE	
SCALE	NO. REQ'D		MFG. APP.	DATE	
NEXT ASSY.			Q.C. APP.	DATE	SIZE A
			ENG. APP.	DATE	DRAWING NUMBER ED3083
					ISSUE A

THIS DRAWING IS TO BE USED AS A REFERENCE TO SERVICES ON WORK PERFORMED BY OR FOR ELECTRONIC DEVICES INC. AND IS FURNISHED SUBJECT TO THE CONDITION THAT IT SHALL NOT BE PREPRODUCED, COPIED, LOANED, OR OTHERWISE SIMILARLY DISPOSED OF DIRECTLY OR INDIRECTLY, AND IS NOT TO BE DISCLOSED TO THIRD PARTIES WITHOUT FIRST OBTAINING ELECTRONIC DEVICES INC. SPECIFIC WRITTEN PERMISSION.